



# KAURI CLIFFS

MATAURI BAY NEW ZEALAND

Kauri Cliffs is an exceptional lodge set high on 6500 acres of a working sheep and cattle farm, overlooking New Zealand's subtropical Northland. Its par 72 championship golf course is ranked 58th in the world.



## THE LODGE AT KAURI CLIFFS

MATAURI BAY, NEW ZEALAND

Bask in the breathtaking views from your luxurious suite or cottage, indulge in a massage, body treatment, or personalized yoga class in the new spa complex, or chill out at one of our three private beaches. Ancient kauri forests, spectacular sand dunes and the magnificent Bay of Islands are all within easy reach.

Set on 6,500 acres near Matauri Bay, Northland, the Lodge at Kauri Cliffs affords spectacular 180 degree views of the Pacific Ocean. Cape Brett and the offshore Cavalli Islands are part of the panorama which can be viewed from the verandas, living room, card room and the guest cottages.



### ON SITE ACTIVITIES

- Golf
- Hiking
- Tennis
- Mountain biking
- Farm tour
- Full Service Luxury Spa
- Fitness Centre
- Three secluded private beaches
- Kayaking
- Clay pigeon shooting

### AREA ACTIVITIES

- Tours feature visits to:
- Ninety Mile Beach
  - Tane Mahuta (NZ's largest Kauri tree)
  - Doubtless Bay
  - Puketi Kauri Forest
  - Rainbow Falls
  - Historic Russell
  - Waitangi Treaty House

**GOLF** - The Par 72 championship golf course measures 7,119 yards or 6,510 meters and offers five sets of tees to challenge every skill level. Fifteen holes view the Pacific Ocean, six of which are played alongside cliffs which plunge to the sea.

The golf complex includes a world class practice range, putting and chipping greens, well-stocked golf shop, and ladies' and men's locker room.

## GETTING TO KAURI CLIFFS

### FROM AUCKLAND

Scheduled plane flights to Kerikeri are available daily, and take 45 minutes (via Auckland).

By Helicopter is 1 hour and 5 minutes direct to the Lodge.

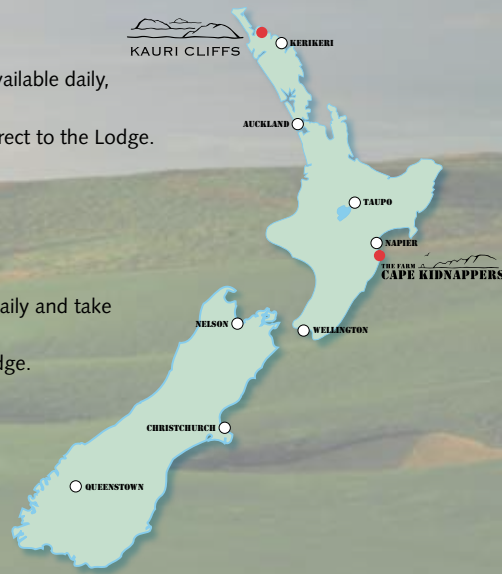
By car allow 4 hours.

### GETTING TO CAPE KIDNAPPERS

#### FROM KAURI CLIFFS

Scheduled plane flights depart Kerikeri daily and take under 2 hours to Napier (via Auckland).

By Helicopter is 3 hours direct to the Lodge.



### Contact Kauri Cliffs

Kerry Molloy - General Manager  
 Tepene Tabelands Rd, Matauri Bay, Northland  
 PO Box 800, Kerikeri, 0245, New Zealand  
 Tel: +64 9 407 0010 Fax: +64 9 407 0061  
 email: reservations@kauricliffs.com

## THE LODGE

- Main lodge overlooks golf course and Pacific Ocean.
- Spacious beamed living room, meeting room, new spa, fitness centre and computer room.
- Gourmet à la carte dining available in the main dining room, verandas, and on one of 3 private beaches.

## GUEST SUITES

- Suites offer private porch, spacious bedroom and sitting area with gas fireplace, walk-in wardrobe and large bathrooms.
- Cottages nestled on the edge of native forest overlooking ocean and golf course.

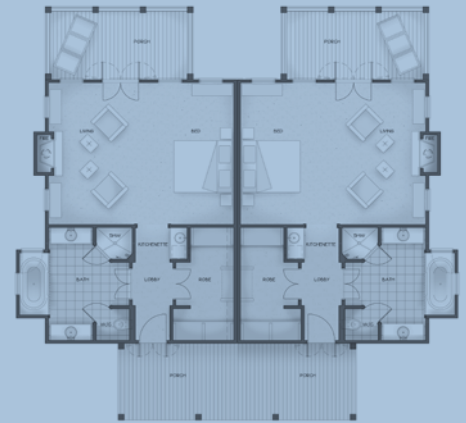
### SUITE 6 Suites – 601 sq ft / 55.9 sq m

	Double	Single
Low Season	\$620	\$920
Shoulder Season	\$760	\$1,135
High Season ('09)	\$950	\$1,415
High Season ('10)	\$990	\$1,575

### DELUXE SUITE 16 Suites – 750 sq ft / 69.7 sq m

	Double	Single	Double	Single
Low Season	\$720	\$1,150	\$320	\$400
Shoulder Season	\$890	\$1,395	\$500	\$650
High Season ('09)	\$1,190	\$1,850	\$525	\$735
High Season ('10)	\$1,190	\$1,850	\$525	\$735

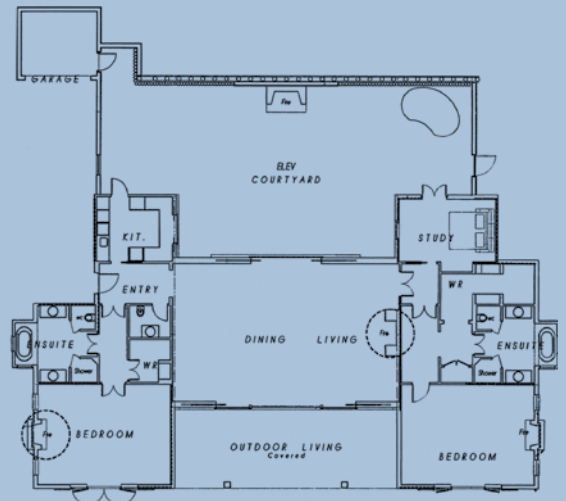
### SECURITY ROOM Connecting 2nd Room



## OWNERS COTTAGE 4,200 sq ft / 390 sq m

- Large (4,200 square foot) two-suite house positioned with main lounge and two bedrooms overlooking ocean and golf course toward Bay of Islands.
- Infinity swimming pool and hot tub.
- Outdoor barbecue and cooking facilities for chef, if private in-house dining is preferred.
- Open fireplaces in bedrooms and main lounge.
- Powder room and Study.

Low Season	\$5,500
Shoulder Season	\$5,500
High Season ('09)	\$8,750
High Season ('10)	\$8,750



Please note: Room tariff includes: pre-dinner drinks with hors d'oeuvres, à la carte dinner, full breakfast, complimentary mini bar including domestic beers (excludes liquor and wine) and use of all lodge facilities excluding golf.

Low season: May 1 '10 - Sep 30 '10 Shoulder season: Oct 1 - Dec 14 '09, April 1 '10 - April 30 '10 & Oct 1 '10 - Dec 14 '10  
 High season ('09): Dec 15 '09 - Mar 31 '10 High season ('10): Dec 15 '10 - Mar 31 '11

Rates are per person per night, excludes Owners Cottage. All rates quoted in New Zealand dollars and exclude 12.5% Government Goods & Service Tax. Two night minimum stay applies over the high season (15 December - 31 March).



**THE FARM**  
**CAPE KIDNAPPERS**  
 HAWKE'S BAY NEW ZEALAND

Critics and golf devotees alike have already fallen in love with Cape Kidnappers' links-style golf course - it has been voted the 27th best golf course in the world. Now golfers and non golfers alike have a luxurious place to stay while exploring the wonders of Hawke's Bay.

## THE FARM AT CAPE KIDNAPPERS

HAWKE'S BAY, NEW ZEALAND

On the exterior, the Lodge resembles a cluster of farm buildings. Local materials are incorporated into graciously scaled rooms full of natural light and unexpected treasures. Comfort and ease are at a premium, with each room taking on a character of its own while harkening back to the rural feeling of the New Zealand sheep station and wine country. Spacious cottages, each with breathtaking views, open to large porches overlooking a stunning Pacific panorama. The cottages feature calm colours and materials that suggest a traditional rural farm, yet contain all of the modern amenities one could wish for.

**FACILITIES** - The Lodge offers two dining rooms and a covered loggia featuring a gourmet à la carte menu. Private dining and room service are available on request. Other rooms within the Lodge include a lounge/living room, library which can be used as a private meeting room, intimate sitting room, wine cellar tasting room, and a computer room.

### ON SITE ACTIVITIES

- Golf
- Hiking
- Gannet Safari
- Farm tour
- Full Service Luxury Spa
- Fitness Centre
- Outdoor 50' Heated Pool, Jacuzzi/Spa, Pool Cabana

### AREA ACTIVITIES

- Wine tours
- Fly fishing
- Hot air ballooning
- Art Deco tour
- Horseback riding
- River kayaking

**GOLF** - The par 71 championship golf course measures 7,119 yards or 6,510 meters that will challenge every skill level. Designed by Tom Doak, currently the hottest architect in golf, the course is ranked Number 27 in the world by Golf Magazine, the world's leading authority on the subject.





## GETTING TO CAPE KIDNAPPERS

### FROM AUCKLAND

Scheduled plane flights to Napier are available daily and take 55 minutes.

By Helicopter is 1 hour 45 minutes. By car allow 6 hours.

### FROM WELLINGTON

Scheduled plane flights to Napier are available daily and take 50 minutes.

By Helicopter is 1 hours 20 minutes. By car allow 4 hours.

### FROM TAUPO

By Helicopter is 45 minutes. By car allow 2hrs 30 minutes.

## GETTING TO KAURI CLIFFS

### FROM CAPE KIDNAPPERS

Scheduled plane flights depart Napier daily and are under 2 hours to Kerikeri (via Auckland).

By Helicopter is 3 hours direct to the Lodge.



## Contact Cape Kidnappers

Jay Robertson - Managing Director  
446 Clifton Road, Te Awanga, Hawke's Bay,  
PO Box 8850, Havelock North, 4157, New Zealand  
Tel: +64 6 875 1900 Fax: +64 6 875 1901  
email: reservations@capekidnappers.com

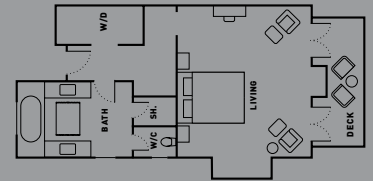
## ACCOMMODATION

Each cottage suite has room controlled air conditioning, high speed wireless internet, remote control flat screen LCD TV, DVD, CD player with iPod connection, safe, fully stocked complimentary mini bar\*, walk-in closet, spacious bathroom with heated towel rack, separate WC and shower stalls, oversized bath tub, and twin vanities. 180 degree panoramic views of the farm, golf course and Pacific Ocean are enjoyed from each suite's private balcony. Interior design is by Linda Bedell of Aspen, Colorado. \*Excludes alcoholic beverages

### LODGE SUITE 4 large suites - 708 sq ft / 65 sq m

- Our largest suites, located inside the Lodge Building, offering the convenience of proximity to lodge facilities, full (wet) mini bars.

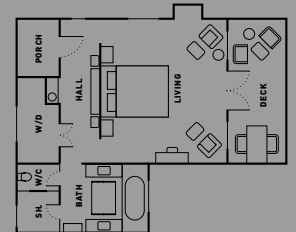
	Double	Single
Low season	\$720	\$1,150
Shoulder season	\$890	\$1,395
High season ('09)	\$1,190	\$1,850
High season ('10)	\$1,190	\$1,850



### RIDGE SUITE 8 suites - 683 sq ft / 63 sq m

- Situated atop the skyline ridge to the southwest of and a short walk from the Lodge.
- Spacious, comfortable and private with fireplaces and full (wet) mini bars.

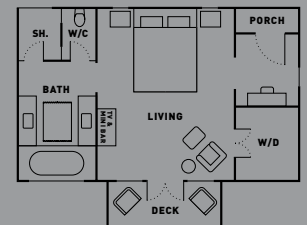
	Double	Single
Low season	\$720	\$1,150
Shoulder season	\$890	\$1,395
High season ('09)	\$1,190	\$1,850
High season ('10)	\$1,190	\$1,850



### HILLTOP SUITE 10 suites - 500 sq ft / 46.5 sq m

- Situated on top of the hill above the Lodge, offering comfort and spectacular vistas.
- Two Hilltop Suites have the option to add an interconnecting second smaller bedroom.

	Hilltop Suite		Connecting 2nd bedroom	
	Double	Single	Double	Single
Low season	\$620	\$920	\$320	\$400
Shoulder season	\$740	\$1,095	\$500	\$650
High season ('09)	\$880	\$1,415	\$500	\$700
High season ('10)	\$890	\$1,435	\$525	\$735



### OWNERS COTTAGE

- 4 deluxe bedrooms with fireplaces, large bathrooms, walk-in closets and private balconies.
- Large living room with stone fireplace, open kitchen and dining area.
- 2 small sitting rooms with fireplaces, TVs and comfortable seating.
- Entrance foyer, powder room, stone terrace and outdoor jacuzzi.
- Can be rented as a 2 bedroom or 4 bedroom house (floor plan available on request).

	2 Bdrm Suite	2 Bdrm House	4 Bdrm House
	MAX 4	MAX 4	MAX 8
Low season	\$3,900	\$5,500	\$8,500
Shoulder season	\$3,900	\$5,500	\$8,500
High season ('09)	\$5,500	\$8,750	\$12,500
High season ('10)	\$5,500	\$8,750	\$12,500

Please note: Room tariff includes, pre-dinner drinks with hors d'oeuvres, à la carte dinner, full breakfast, complimentary mini bar including domestic beers (excludes liquor and wine) and use of all lodge facilities excluding golf.

Low season: May 1 '10 - Sep 30 '10 Shoulder season: Oct 1 - Dec 14 '09, April 1 '10 - April 30 '10 & Oct 1 '10 - Dec 14 '10  
High season ('09): Dec 15 '09 - Mar 31 '10 High season ('10): Dec 15 '10 - Mar 31 '11

Rates are per person per night, excludes Owners Cottage. All rates quoted in New Zealand dollars and exclude 12.5% Government Goods & Service Tax. Two night minimum stay applies over the high season (15 December - 31 March).